



62A00-1



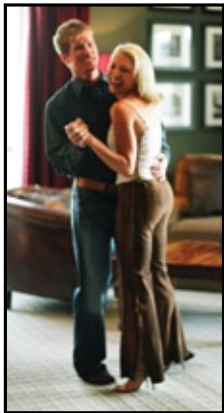
Hi-Fi by HAI

Technical Sheet

A Revolutionary Whole Home Audio System



Hi-Fi by HAI allows you to share your music throughout your home, using the sources you already own!



Mom can listen to relaxing jazz on the satellite radio in the kitchen, while dad listens to the big game as he barbeques outside, and the kids jam away to rock upstairs! Or set them all

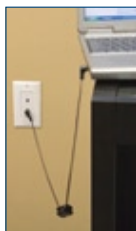
to listen to the same source and volume.

With Hi-Fi by HAI, you have the ability to listen to different sources at the same time at different volume levels throughout your home. Hi-Fi comes standard as a four zone, four source kit, and is expandable to eight zones, six sources.

What Makes Hi-Fi Revolutionary?

Traditional Whole Home Audio Systems require your music source equipment to be in a central audio rack and many of them require this source equipment to be proprietary brands. Hi-Fi allows you to listen to the music sources that you already own or any brand that you wish to purchase. These sources can be located throughout the house.

How Is This Done?



The main controller of your Hi-Fi is mounted in a closet or basement. Remote Input Modules (RIMs) are installed in rooms that have music sources, such as CD players, computers, iPods™, satellite radios, TVs, etc. The sources are plugged into the RIMs and voila - you can now enjoy your favorite tunes in any room!



Controlling Hi-Fi couldn't be easier. There are no confusing buttons, just one knob and a display. Simply mount a Volume-Source Control (VSC) in any room that has speakers that you wish to control. The VSC gives you the ability to play any music that's connected to a RIM - no matter if the RIM is in the same room or not!

Using the VSC is Easy

- Turn the knob to adjust volume.
- Press the knob to change the source.
- Press and hold the knob to alter bass, treble, or to turn the entire system on/off.

The VSC and RIM come in White, but are also available in Almond, Black, and Ivory.





Now music can flow freely and be enjoyed in any room, by the pool, in the backyard, or anywhere that you want it to be.

Use a Remote Control



Hi-Fi by HAI allows the convenience of remote control. Your Hi-Fi comes with a basic source and

volume remote. You can purchase a Hi-Fi programmable remote that is compatible with your source equipment.

You may also point your original source equipment remote at any VSC, regardless of what room you're in, to change stations, CD

tracks, pause, play, mute, or crank up the sound!

Add Additional Zones

For every zone desired after the initial four, an additional Zone Amplifier Card must be installed. Up to four additional Zone Amplifier Cards may be installed for the Hi-Fi by HAI to accommodate up to the full eight zones.

Hi-Fi has an expansion kit that comes with everything you need to have Hi-Fi reach its maximum

capacity. If more power is desired, there are two inputs for additional power amplifiers.

Easily Upgrade to the Newest Technology

When you want to upgrade to the newest source equipment, you won't have to cut holes in the wall or alter an audio rack to accommodate new wiring and equipment. Simply unplug your old source, such as a CD player, from the RIM, and plug in the latest and greatest iPod™.

Programmable Remote

Turn Hi-Fi on or off, mute a zone, select the source you would like to listen to, and adjust the volume.

The palm-sized basic remote is backlit with cool blue LED lights.

Basic Remote



This section provides the same functionality as a standard programmable remote control, such as channel up/down, volume up/down, pause/play, etc. This section controls source equipment such as iPods™, receivers, or DVD players.

The 8 buttons at the bottom of the remote are for macros. Macros can be used to control a home theatre operation, set a favorite channel, or for other multiple functions you would like to control with one key press.



Easy to Operate. A single knob controls volume, source and more! No programming required.

Affordable High Fidelity Performance. Clear and powerful Class D digital amplifiers. Plus, it's a modular system so it's easy to expand at a later date.

First System with Remote Input Modules. Enjoy music from sources throughout the house. No audio rack required.

Connect Hi-Fi to an HAI Home Control System

Hi-Fi by HAI may be used as a stand-alone system or with an HAI home control system. With a home control system, you may coordinate your music with activities in the home.

- Set every room to the iPod™ and preset the volumes for a party.
- Mute bedroom and outdoor zones when it's bedtime.
- Turn the entire system off when leaving the house.
- Use your telephone to page throughout the house.

Use any of HAI's user interfaces to control Hi-Fi, including OmniTouch Touchscreens, consoles, keypads, Snap-Link, Home Control for Windows® Media Center, and Web-Link II.

Technical Specifications

Power is 40 watts RMS per zone at 4 ohms. The audio signal from the source is inputted at the RIM and travels over Cat 5 to the main unit. The VSC is also connected to the main unit using Cat 5.

The Class D digital amplifiers are in the main unit, (not in the VSC) so amplifier power is not hindered by Cat 5 wire. Speakers are connected to the main unit using standard 16 gauge speaker wire. There are two variable outputs (Zones 1 and 8) for connection to external power amplifiers, and a page/mute input.

Signals from remote controls are picked up by a sensor in the VSC and routed to the RIM that the VSC has selected as its source. Signals for source equipment are sent out the "IR Out" port on the RIM to control the source.

CHECK IT OUT!

A demo for Hi-Fi is available on HAI's Website. Complete with sound, the interactive demonstration shows the benefits of Hi-Fi and how it works in a home!

Graphically Control Hi-Fi When Connected to an HAI Home Control System



Control Hi-Fi wirelessly via Snap-Link on an Ultra Mobile PC.



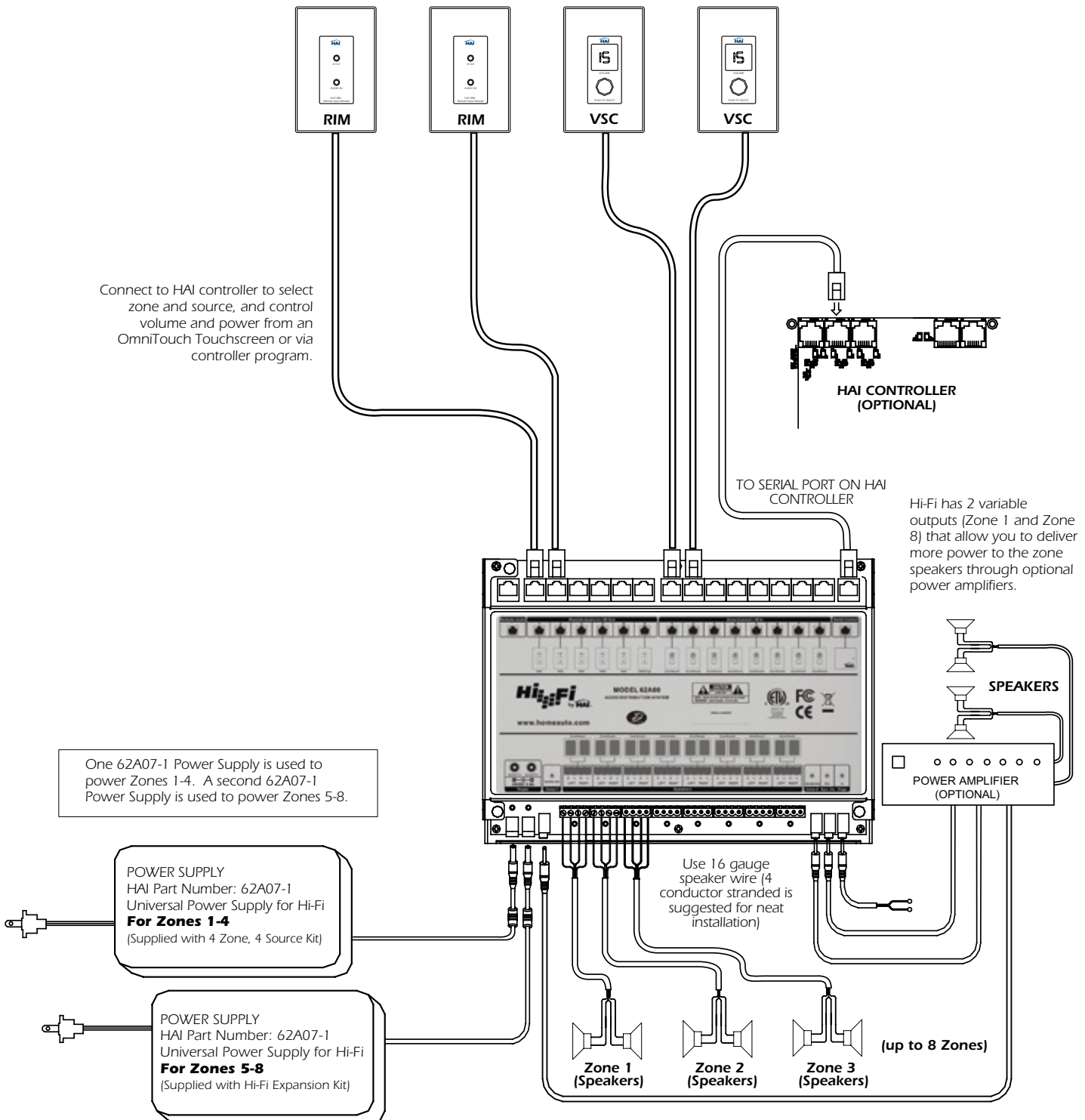
Control the volume and source of any zone with an OmniTouch Touchscreen.

RIM

- **Remote Input Module** - allows any source from anywhere in the house to be listened to in any or all zones. It also has an IR emitter port for routed IR commands from the VSC.
- Use CAT-5 cable from the RIM to Remote Audio In on the Hi-Fi.
- Maximum of six RIM's.

VSC

- **Volume-Source Control** - control volume and select source, in addition to adjusting bass, treble, balance, and source gain. It also has an infrared receiver.
- Use CAT-5 cable from the VSC to Zone Control In on the Hi-Fi.
- Maximum of eight VSC's



Hi-Fi by HAI PARTS LIST

Controllers:		Accessories:	
Description	Part #	Description	Part #
Hi-Fi by HAI 4 Zone, 4 Source Kit in Vented Enclosure	62A00-1	Hi-Fi by HAI Zone Amplifier Card (ZAC)	62A02-1
Hi-Fi by HAI 4 Zone, 4 Source Kit for Structured Wiring Enclosures	62A00-2	Hi-Fi by HAI Volume-Source Control (VSC)	62A03-1
Hi-Fi by HAI 4 Zone, 4 Source Main Assembly	62A01-1	Hi-Fi by HAI Remote Input Module (RIM)	62A04-1
Hi-Fi by HAI Expansion Kit (to 8 zone 6 source)	62A12-1	Hi-Fi by HAI Remote Control	62A05-1
 <p>62A00-2</p> <p>Hi-Fi by HAI includes Hi-Fi Main Board Assembly with four installed Zone Apmplifier Cards with Vented Enclosure (62A00-1) or on backplate for Structured Wiring Enclosures (62A00-2), four Remote Input Modules, four Volume-Source Controls, Power Supply, one 62A05-1 Remote Control, cable for HAI controllers, and manuals.</p>		Hi-Fi by HAI Programmable Remote Control	62A06-1
		Hi-Fi by HAI Power Supply	62A07-1
		Hi-Fi by HAI IR Flasher	62A08-1
		Hi-Fi by HAI Vented Enclosure	62A09-1
		Hi-Fi by HAI RIM Color Change Kit, Almond, case of 12	62A10-ALCS
		Hi-Fi by HAI RIM Color Change Kit, Black, case of 12	62A10-BLCS
		Hi-Fi by HAI RIM Color Change Kit, Ivory, case of 12	62A10-IVCS
		Hi-Fi by HAI RIM Color Change Kit, White, case of 12	62A10-WHCS
		Hi-Fi by HAI VSC Color Change Kit, Almond, case of 12	62A11-ALCS
		Hi-Fi by HAI VSC Color Change Kit, Black, case of 12	62A11-BLCS
		Hi-Fi by HAI VSC Color Change Kit, Ivory, case of 12	62A11-IVCS
		Hi-Fi by HAI VSC Color Change Kit, White, case of 12	62A11-WHCS
		Hi-Fi by HAI Retractable Cables (3.5mm to two RCA)	62A13-1
		Hi-Fi by HAI Retractable Cables (3.5mm male to 3.5mm male)	62A14-1